

# Table of Contents

<b>Dedication</b>	iii
<b>Preface</b>	xix

## **Chapter 1: Introduction to SOLIDWORKS 2022**

Introduction to SOLIDWORKS 2022	1-2
Part Mode	1-2
Assembly Mode	1-3
Drawing Mode	1-3
System Requirements	1-4
Getting Started with SOLIDWORKS	1-4
Menu Bar and SOLIDWORKS Menus	1-7
CommandManager	1-8
Part Mode CommandManagers	1-8
Assembly Mode CommandManagers	1-10
Drawing Mode CommandManagers	1-11
Customized CommandManager	1-11
Toolbar	1-12
Pop-up Toolbar	1-12
View (Heads-Up) Toolbar	1-12
Shortcut Bar	1-13
Mouse Gestures	1-13
Dimensioning Standards and Units	1-14
Important Terms and Their Definitions	1-14
Feature-based Modeling	1-14
Parametric Modeling	1-14
Bidirectional Associativity	1-15
Windows Functionality	1-16
SWIFT Technology	1-16
Geometric Relations	1-16
Blocks	1-18
Library Feature	1-18
Design Table	1-18
Equations	1-18
Collision Detection	1-19
What's Wrong Functionality	1-19
SimulationXpress	1-19
Physical Dynamics	1-19
Physical Simulation	1-20
Seed Feature	1-20
FeatureManager Design Tree	1-20
Absorbed Features	1-20
Child Features	1-20
Dependent Features	1-20

Auto-Backup Option	1-20
Selecting Hidden Entities	1-21
Hot Keys	1-21
Color Scheme	1-23
Self-Evaluation Test	1-23
Review Questions	1-24

## Chapter 2: Drawing Sketches for Solid Models

The Sketching Environment	2-2
Starting a New Session of SOLIDWORKS 2022	2-3
Task Panes	2-3
SOLIDWORKS Resources Task Pane	2-3
Design Library Task Pane	2-5
File Explorer Task Pane	2-5
View Palette Task Pane	2-5
Appearances, Scenes, and Decals Task Pane	2-5
Custom Properties Task Pane	2-6
Starting a New Document in SOLIDWORKS 2022	2-7
Part	2-7
Assembly	2-7
Drawing	2-7
Understanding the Sketching Environment	2-8
Setting the Document Options	2-10
Modifying the Drafting Standards	2-11
Modifying the Linear and Angular Units	2-11
Modifying the Snap and Grid Settings	2-13
Learning Sketcher Terms	2-14
Origin	2-14
Inferencing Lines	2-15
Select Tool	2-15
Invert Selection Tool	2-16
Drawing Lines	2-17
Orientation Rollout	2-17
Options Rollout	2-18
Drawing Continuous Lines	2-18
Drawing Individual Lines	2-19
Line Cursor Parameters	2-20
Drawing Tangent or Normal Arcs Using the Line Tool	2-21
Drawing Construction Lines or Centerlines	2-22
Drawing Midpoint Line	2-22
Drawing the Lines of Infinite Length	2-23
Drawing Circles	2-23
Drawing Circles by Defining their Center Points	2-24
Drawing Circles by Defining Three Points	2-24
Drawing Construction Circles	2-25
Drawing Arcs	2-25
Drawing Tangent/Normal Arcs	2-25

Drawing Centerpoint Arcs	2-27
Drawing 3 Point Arcs	2-28
Drawing Rectangles	2-29
Drawing Rectangles by Specifying their Corners	2-29
Drawing Rectangles by Specifying the Center and a Corner	2-30
Drawing Rectangles at an Angle	2-30
Drawing Centerpoint Rectangles at an Angle	2-31
Drawing Parallelograms	2-31
Drawing Polygons	2-32
Drawing Splines	2-34
Drawing Slots	2-35
Creating a Straight Slot	2-35
Creating a Centerpoint Straight Slot	2-35
Creating a 3 Point Arc Slot	2-36
Creating a Centerpoint Arc Slot	2-36
Placing Sketched Points	2-37
Drawing Ellipses	2-37
Drawing Elliptical Arcs	2-38
Drawing Parabolic Curves	2-39
Drawing Conic Curves	2-40
Drawing Display Tools	2-41
Zoom to Fit	2-41
Zoom to Area	2-41
Zoom In/Out	2-42
Zoom to Selection	2-42
Pan	2-42
Previous View	2-42
Redraw	2-43
Shaded Sketch Contours	2-43
Deleting Sketched Entities	2-43
Tutorial 1	2-43
Tutorial 2	2-49
Tutorial 3	2-52
Tutorial 4	2-56
Self-Evaluation Test	2-62
Review Questions	2-62
Exercise 1	2-63
Exercise 2	2-64
Exercise 3	2-64
Exercise 4	2-65

## Chapter 3: Editing and Modifying Sketches

Editing Sketched Entities	3-2
Trimming Sketched Entities	3-2
Extending Sketched Entities	3-6
Convert Entities	3-6
Silhouette Entities	3-7

Intersection Curves	3-8
Filleting Sketched Entities	3-8
Chamfering Sketched Entities	3-10
Offsetting Sketched Entities	3-11
Offsetting Edges or Face of a Model	3-13
Mirroring Sketched Entities	3-14
Mirroring Entities Dynamically	3-15
Moving Sketched Entities	3-16
Rotating Sketched Entities	3-18
Scaling Sketched Entities	3-19
Stretching Sketched Entities	3-20
Copying and Pasting Sketched Entities	3-21
Creating Patterns	3-21
Creating Linear Sketch Patterns	Enhanced 3-22
Creating Circular Sketch Patterns	3-25
Editing Patterns	3-27
Writing Text in the Sketching Environment	3-28
Modifying Sketched Entities	3-29
Modifying a Sketched Line	3-29
Modifying a Sketched Circle	3-29
Modifying a Sketched Arc	3-29
Modifying a Sketched Polygon	3-29
Modifying a Spline	3-30
Modifying the Coordinates of a Point	3-32
Modifying an Ellipse or an Elliptical Arc	3-32
Modifying a Parabola	3-32
Dynamically Modifying and Copying Sketched Entities	3-32
Splitting Sketched Entities	3-33
Creating Segments in Sketched Entities	3-33
Tutorial 1	3-34
Tutorial 2	3-38
Tutorial 3	3-42
Self-Evaluation Test	3-49
Review Questions	3-50
Exercise 1	3-51
Exercise 2	3-51
Exercise 3	3-52
Exercise 4	3-52
Exercise 5	3-53
Exercise 6	3-53

## Chapter 4: Adding Relations and Dimensions to Sketches

Applying Geometric Relations to Sketches	4-2
Applying Relations Using the Add Relations PropertyManager	4-2
Automatic Relations	4-7
Design Intent	4-8
Dimensioning a Sketch	4-9

Horizontal/Vertical Dimensioning	4-11
Aligned Dimensioning	4-23
Angular Dimensioning	4-24
Diametric Dimensioning	4-26
Radial Dimensioning	4-26
Linear Diametric Dimensioning	4-27
Ordinate Dimensioning	4-28
Baseline Dimension	4-28
Chain Dimension	4-28
Horizontal Ordinate Dimensioning	4-29
Vertical Ordinate Dimensioning	4-29
Path Length Dimension	4-30
Auto Insert Dimension	4-30
Concept of a Fully Defined Sketch	4-30
Fully Defined	4-30
Overdefined	4-31
Underdefined	4-31
Dangling	4-31
No Solution Found	4-31
Invalid Solution Found	4-32
Sketch Dimension or Relation Status	4-32
Deleting Overdefined Dimensions	4-32
Displaying and Deleting Relations	4-35
Opening an Existing File	4-38
Tutorial 1	4-41
Tutorial 2	4-50
Tutorial 3	4-56
Self-Evaluation Test	4-64
Review Questions	4-64
Exercise 1	4-65
Exercise 2	4-66
Exercise 3	4-67

## Chapter 5: Advanced Dimensioning Techniques and Base Feature Options

Advanced Dimensioning Techniques	5-2
Fully Defining the Sketches	5-2
Dimensioning the True Length of an Arc	5-4
Measuring Distances and Viewing Section Properties	5-5
Measuring Distances	5-5
Determining the Section Properties of Closed Sketches	5-7
Creating Base Features by Extruding Sketches	5-9
Creating Solid Extruded Features	5-9
Creating Thin Extruded Features	5-12
Creating Base Features by Revolving Sketches	5-14
Creating Solid Revolved Features	5-15
Creating Thin Revolved Features	5-16

Determining the Mass Properties of Parts	5-18
Dynamically Rotating the View of a Model	5-19
Rotating the View Freely in 3D Space	5-19
Rotating the View around a Selected Vertex, Edge, or Face	5-19
Modifying the View Orientation	5-20
Changing the Orientation Using the Reference Triad	5-22
Restoring the Previous View	5-22
Displaying the Drawing Area in Viewports	5-22
Displaying the Drawing Area in Two Horizontal Viewports	5-23
Displaying the Drawing Area in Two Vertical Viewports	5-23
Displaying the Drawing Area in Four Viewports	5-24
Display Modes of a Model	5-24
Wireframe	5-24
Hidden Lines Visible	5-25
Hidden Lines Removed	5-25
Shaded With Edges	5-25
Shaded	5-25
Additional Display Modes	5-25
Shadows in Shaded Mode	5-25
Perspective	5-26
Assigning Materials and Textures to Models	5-26
Assigning Materials to a Model	5-27
Changing the Appearance of the Model	5-27
Editing the Appearances	5-29
Tutorial 1	5-30
Tutorial 2	5-35
Tutorial 3	5-40
Self-Evaluation Test	5-45
Review Questions	5-46
Exercise 1	5-47
Exercise 2	5-48
Exercise 3	5-48

## Chapter 6: Creating Reference Geometries

Importance of Sketching Planes	6-2
Creating Reference Geometry	6-2
Reference Planes	6-3
Creating New Planes	6-4
Creating Reference Axis	6-10
Creating Reference Points	6-13
Creating Reference Coordinate Systems	6-16
Creating Center of Mass	6-16
Creating a Bounding Box	6-17
Advanced Boss/Base Options	6-18
Modeling Using the Contour Selection Method	6-25
Creating Cut Features	6-28
Creating Extruded Cuts	6-29

Creating Multiple Bodies in the Cut Feature	6-32
Creating Revolved Cuts	6-34
Concept of the Feature Scope	6-34
Tutorial 1	6-35
Tutorial 2	6-39
Tutorial 3	6-44
Self-Evaluation Test	6-50
Review Questions	6-51
Exercise 1	6-52
Exercise 2	6-54
Exercise 3	6-55

## Chapter 7: Advanced Modeling Tools-I

Advanced Modeling Tools	7-2
Creating Simple Holes	7-2
Creating Standard Holes Using the Hole Wizard	Enhanced 7-3
Creating Advanced Holes	7-9
Creating Threads	7-12
Adding External Cosmetic Threads	Enhanced 7-15
Creating Fillets	7-16
Selection Options	7-32
Creating Fillets Using the FilletXpert	7-35
Creating Chamfers	7-36
Creating Shell Features	7-42
Creating Wrap Features	7-45
Tutorial 1	7-47
Tutorial 2	7-54
Tutorial 3	7-61
Self-Evaluation Test	7-69
Review Questions	7-70
Exercise 1	7-71
Exercise 2	7-72
Exercise 3	7-73

## Chapter 8: Advanced Modeling Tools-II

Advanced Modeling Tools	8-2
Creating Mirror Features	8-2
Creating Linear Pattern Features	8-6
Creating Circular Pattern Features	8-12
Creating Sketch Driven Patterns	8-14
Creating Curve Driven Patterns	8-16
Creating Table Driven Patterns	8-18
Creating Fill Patterns	8-20
Creating Variable Patterns	8-24
Creating Rib Features	8-25
Displaying the Section View of a Model	8-30

Changing the Display States	8-33
Tutorial 1	8-35
Tutorial 2	8-41
Tutorial 3	8-46
Self-Evaluation Test	8-56
Review Questions	8-57
Exercise 1	8-58
Exercise 2	8-58
Exercise 3	8-59
Exercise 4	8-61

## Chapter 9: Editing Features

Editing the Features of a Model	9-2
Editing Using the Edit Feature Tool	9-2
Editing Sketches of the Sketch-based Features	9-3
Editing the Sketch Plane Using the Edit Sketch Plane Tool	9-3
Editing Using the Instant3D Tool	9-4
Editing Features and Sketches by Using the Cut, Copy, and Paste Options	9-7
Cutting, Copying, and Pasting Features and Sketches from One Document to Another	9-8
Copying Features using Drag and Drop	9-8
Deleting Features	9-9
Deleting Bodies	9-10
Suppressing Features	9-11
Unsuppressing the Suppressed Features	9-11
Unsuppressing Features with Dependents	9-11
Hiding Bodies	9-11
Moving and Copying Bodies	9-12
Reordering the Features	9-14
Rolling Back the Feature	9-15
Renaming Features	9-16
Creating Folders in the FeatureManager Design Tree	9-16
What's Wrong Functionality	9-16
Tutorial 1	9-18
Tutorial 2	9-24
Tutorial 3	9-28
Self-Evaluation Test	9-34
Review Questions	9-34
Exercise 1	9-35
Exercise 2	9-36

## Chapter 10: Advanced Modeling Tools-III

Advanced Modeling Tools	10-2
Creating Sweep Features	10-2
Creating Cut-Sweep Features	10-12

Creating Loft Features	10-13
Adding a Section to a Loft Feature	10-21
Creating Lofted Cuts	10-22
Creating 3D Sketches	10-23
Creating Grid Systems	10-25
Mirroring Sketch Entities in a 3D Sketch	10-26
Editing 3D Sketches	10-26
Creating Curves	10-26
Extruding a 3D Sketch	10-37
Creating Draft Features	10-38
Creating Dome Features	10-42
Creating Indents	10-45
Creating Deform Features	10-48
Creating Flex Features	10-52
Creating Fastening Features	10-56
Creating the Mounting Boss	10-56
Creating Snap Hooks	10-59
Tutorial 1	10-61
Tutorial 2	10-64
Tutorial 3	10-68
Self-Evaluation Test	10-72
Review Questions	10-73
Exercise 1	10-74
Exercise 2	10-75
Exercise 3	10-76

## Chapter 11: Assembly Modeling-I

Assembly Modeling	11-2
Types of Assembly Design Approach	11-2
Creating Bottom-up Assemblies <small>Enhanced</small>	11-3
Placing Components in the Assembly Document	11-3
Assembling Components	11-8
Creating Top-down Assemblies	11-28
Creating Components in the Top-down Assembly	11-28
Moving Individual Components	11-29
Moving Individual Components by Dragging	11-29
Moving Individual Components Using the Move Component Tool	11-29
Rotating Individual Components	11-30
Rotating Individual Components by Dragging	11-30
Rotating Individual Components Using the Rotate Component Tool	11-30
Moving and Rotating Individual Components Using the Triad	11-31
Assembly Visualization	11-32
Tutorial 1	11-33
Tutorial 2	11-48
Self-Evaluation Test	11-54
Review Questions	11-55

Exercise 1	11-56
Exercise 2	11-59
Exercise 3	11-67

## Chapter 12: Assembly Modeling-II

Advanced Assembly Mates	12-2
Applying the Profile Center Mate	12-2
Applying the Symmetric Mate	12-3
Applying the Width Mate	12-3
Applying the Path Mate	12-4
Applying the Distance Mate	12-6
Applying the Angle Mate	12-6
Applying the Linear/Linear Coupler Mate	12-6
Mechanical Mates	12-6
Applying the Cam Mate	12-6
Applying the Slot Mate	12-7
Applying the Hinge Mate	12-8
Applying the Gear Mate	12-9
Applying the Rack Pinion Mate	12-10
Applying the Screw Mate	12-10
Applying the Universal Joint Mate	12-11
Creating Sub-assemblies	12-11
Bottom-up Sub-assembly Design Approach	12-11
Top-down Sub-assembly Design Approach	12-11
Inserting a New Sub-assembly	12-12
Deleting Components and Sub-assemblies	12-12
Editing Assembly Mates	12-13
Replacing Mated Entities	12-13
Editing Components	12-14
Editing Sub-assemblies	12-15
Dissolving Sub-assemblies	12-16
Replacing Components	12-16
Creating Patterns of Components in an Assembly	12-18
Pattern Driven Component Pattern	12-18
Local Pattern	12-20
Copying and Mirroring Components	12-21
Copying a Component along with Mates	12-23
Copying Multiple Components	12-24
Magnetic Mates	12-24
Simplifying Assemblies Using the Visibility Options	12-27
Hiding Components	12-27
Hiding Faces Temporarily	12-27
Suppressing and Unsuppressing the Components	12-28
Changing the Transparency Conditions	12-28
Changing the Display States	12-28
Checking Interferences in an Assembly	12-28
Checking the Hole Alignment	12-30

Creating Assemblies for Mechanism	12-31
Analyzing Collisions Using the Collision Detection Tool	12-32
Creating Exploded State of an Assembly	12-34
Regular step (translate and rotate)	12-34
Radial step	12-36
Creating the Explode Line Sketch	12-36
Creating Smart Explode Lines	12-38
Tutorial 1	12-39
Tutorial 2	12-52
Self-Evaluation Test	12-56
Review Questions	12-57
Exercise 1	12-58

## Chapter 13: Working with Drawing Views-I

The Drawing Mode	13-2
Starting a Drawing Document	13-2
Types of Views	13-5
Model View	13-5
Projected View	13-6
Section View	13-6
Aligned Section View	13-6
Removed Section View	13-6
Auxiliary View	13-6
Detail View	13-6
Break View	13-6
Broken-out Section View	13-6
Crop View	13-6
Alternate Position View	13-7
Generating Standard Drawing Views	13-7
Generating Model Views	13-7
Using the View Palette to Place the Drawing Views	13-9
Generating the Three Standard Views	13-10
Generating Standard Views Using the Relative View Tool	13-12
Generating Standard Views Using the Predefined View Tool	13-14
Generating Derived Views	13-15
Generating Projected Views	13-16
Generating Section Views	13-17
Generating Broken-out Section Views	13-26
Generating Removed Section Views	13-28
Generating Auxiliary Views	13-29
Generating Detail Views	13-31
Generating Crop Views	13-33
Generating Broken Views	13-34
Generating Alternate Position Views	Enhanced 13-36
Generating Drawing Views of the Exploded State of an Assembly	13-37
Working with Interactive Drafting in SOLIDWORKS	13-38
Editing and Modifying Drawing Views	13-39

Changing the View Orientation	13-39
Changing the Scale of Drawing Views	13-39
Deleting Drawing Views	13-39
Rotating Drawing Views	13-39
Manipulating the Drawing Views	13-40
Modifying the Hatch Pattern in Section Views	13-40
Properties Rollout	13-40
Layer Rollout	13-41
Options Rollout	13-41
Tutorial 1	13-42
Tutorial 2	13-47
Self-Evaluation Test	13-52
Review Questions	13-53
Exercise 1	13-54

## Chapter 14: Working with Drawing Views-II

Adding Annotations to Drawing Views	14-2
Generating Annotations Using the Model Items Tool	14-2
Adding Reference Annotations	Enhanced 14-4
Aligning the Dimensions	14-19
Editing Annotations	14-19
Adding the Bill of Materials (BOM) to a Drawing	Enhanced 14-20
Table Template Rollout	14-20
Table Position Rollout	14-20
BOM Type Rollout	14-20
Configurations Rollout	14-21
Part Configuration Grouping Rollout	14-22
Keep Missing Item/Row Rollout	14-22
Item Numbers Rollout	14-22
Border Rollout	14-23
Setting Anchor Point for the BOM	14-23
Linking Bill of Materials	14-23
Adding Balloons to the Drawing Views	14-23
Adding Balloons Using the AutoBalloon Tool	14-24
Creating Magnetic Lines	14-26
Adding New Sheets to the Drawing Document	14-27
Editing the Sheet Format	14-28
Creating User-Defined Sheet Formats	14-28
Tutorial 1	14-29
Tutorial 2	14-35
Self-Evaluation Test	14-39
Review Questions	14-40
Exercise 1	14-41

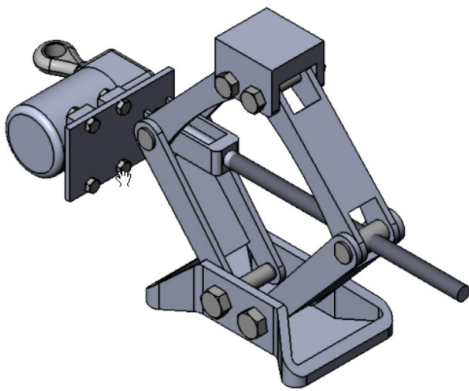
## PROJECTS AVAILABLE FOR FREE DOWNLOAD

In this textbook, four projects are available for free download. You can download these projects from our website **www.cadcim.com**.

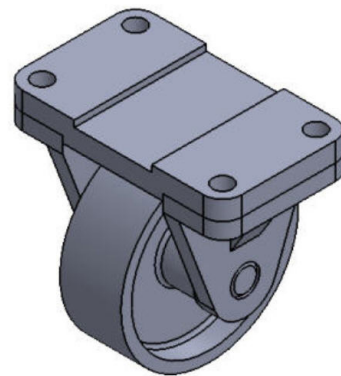
To download these projects, follow the path: *Textbooks > CAD/CAM > SOLIDWORKS > SOLIDWORKS 2022 for Designers > Projects for Free Download* and then select the project name from the **Projects for Free Download** drop-down. Click the **Download** button to download the project in the PDF format.

### Note

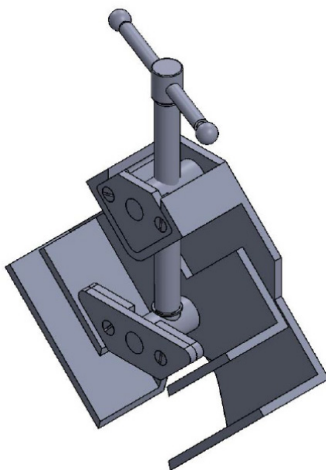
For additional projects, visit **www.cadcim.com** and follow the path: *Textbooks > CAD/CAM > Parametric Solid Modeling > Parametric Solid Modeling Projects*



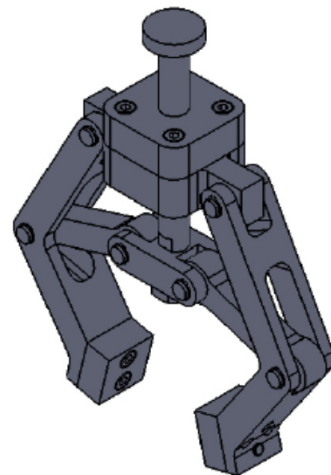
*Project 1: Car Jack Assembly*



*Project 2: Wheel Assembly*



*Project 3: Angle Clamp Assembly*



*Project 4: Pneumatic Gripper Assembly*

**SOLIDWORKS Certification Exam****For Free Download**

Tutorial 1	SCE-2
Tutorial 2	SCE-8
Tutorial 3	SCE-14
Exercise 1	SCE-20
Exercise 2	SCE-21
<b>Index</b>	<b>I-1</b>